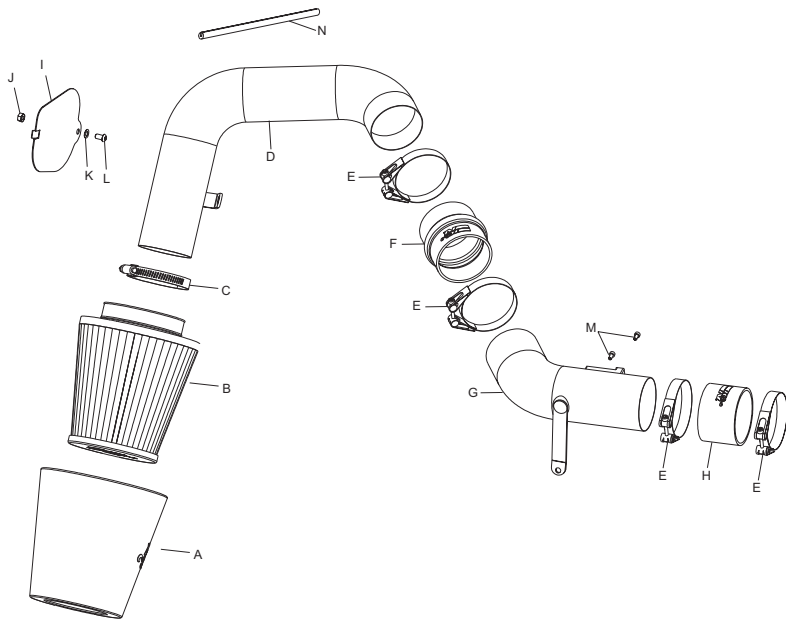


INSTALLATION INSTRUCTIONS

69-8000

Subaru
2002 Impreza WRX
F4-2.0L Turbo



TOOLS NEEDED:

- Ratchet
- 6" extension
- 8mm socket
- 10mm socket
- 12mm socket
- 14mm socket
- 14mm wrench
- 3mm allen wrench
- 4mm allen wrench
- Phillips screw driver
- Flat blade screw driver

PARTS LIST

Description	Qty.	P/N
A Drycharger Nylon Wrap, black	1	RC-9350DK*
A Drycharger Nylon Wrap, blue	1	RC-9350DL*
B Filtercharger	1	RC-9350
C Hose clamp, #44	1	08577
D Typhoon Cold Air Tube	1	087035
E Hose Clamp, #300	1	08532
F Silicone Hump Hose, blue	1	08191**
F Silicone Hump Hose, black	1	08439**
G Typhoon Intake Tube	1	087034
H Silicone Hose, blue	1	08196**
H Silicone Hose, black	1	08440**
I Block-off Plate	1	079070
J 6mm Hex Nut	1	07506
K 6mm Wave Washer	1	08277
L 6mm Buttonhead screw, 12mm L.	1	07794
M M4 Cap Screw, 8mm L.	2	07733
N Edge Trim, 12" L.	1	102466

*You will receive one blue or one black nylon wrap depending on color of kit ordered

**You will receive one blue or one black silicone hose depending on color of kit ordered

NOTE: For optimum results, 91+ octane fuel or better is suggested.

TO START:

1. Turn the ignition OFF and disconnect the vehicle's negative battery cable.



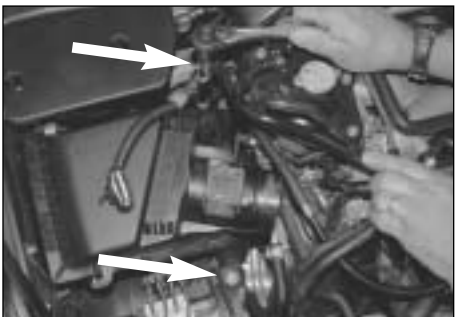
2. Disconnect the mass air sensor electrical connection as shown.



3. Loosen and remove the two bolts that secure the air inlet duct to the radiator core support, then remove the air inlet duct as shown.



4. Loosen the hose clamps at the air cleaner assembly and at the turbo inlet tube, then remove the stock intake tube as shown.



5. Loosen and remove the two bolts that secure the air cleaner assembly as shown.



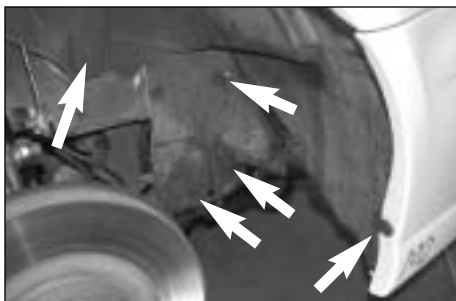
6. Pull upwards to remove the air cleaner assembly as shown.



7. Loosen and remove the two screws that secure the mass air sensor to the air cleaner assembly, then, remove the mass air sensor as shown.



8. Raise the vehicle and support it with jack stands, then remove the front passenger side tire as shown.



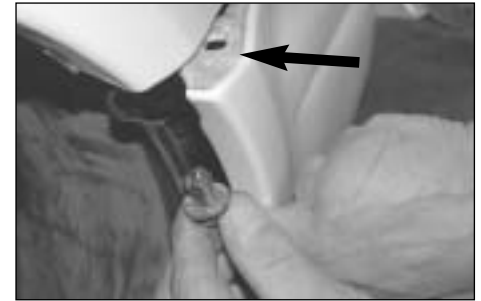
9. Remove the five plastic push/screw clips that secure the inner wheel house valance as shown.



10. Remove the 6 screw in push clips that secure the air duct to the lower valance, then, remove the air duct as shown.



11. Remove the two remaining push clips that secure the lower valance, then, pull the valance down as shown.



12. From inside the apron, remove the push clip that secures the apron to the upper fender as shown.



13. Remove the hex nut that secures the air intake resonator to the inner fender as shown.



14. Loosen and remove the second hex nut that secures the air intake resonator from underneath the vehicle as shown.



15. Remove the air intake resonator as shown.



16. Install the silicone hose and hose clamps onto the turbo inlet tube and secure as shown.



17. Loosen and remove the hex bolt on the cam cover as shown.



18. Using the provided allen bolts, secure the mass air sensor into the adapter on the K&N intake tube as shown.

NOTE: Before installing the mass air sensor, clean the inside of the tube with water and a towel.



19. Slide the K&N intake tube into the silicone hose and line up the tube bracket with the cam cover, then, secure the bracket to the cam cover using the hex bolt removed in step 13.



20. Tighten the hose clamp on the K&N intake tube as shown.



21. Install the silicone hump hose and hose clamps onto the K&N intake tube as shown. Note: Do not tighten as the silicone hose will have to be slid onto the cold air tube in a later step.



22. Using the provided hardware install the block-off plate into the hole on the inner fender and secure as shown.



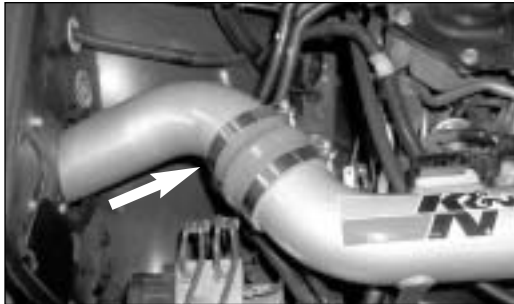
23. Install the provided edge trim onto the hole on the inner fender as shown, trim excess if necessary.



24. From underneath the vehicle loosen and remove the hex nut that secures the ABS pump to the inner fender as shown.



25. Slide the K&N cold air tube intake tube from underneath the vehicle into the hole in the inner fender, then, line up the bracket with the ABS bolt, and finger tighten with the nut removed in step 20. **NOTE:** Before installing the mass air sensor, clean the inside of the tube with water and a towel.



26. Slide the silicone hump hose onto the K&N cold air intake tube as shown. **Note:** Do not tighten at this time.



27. Using a 14mm wrench, tighten the hex nut on the cold air intake tube bracket as shown.



28. Position the tube in the hole in the inner fender for best fit, then, tighten the hose clamps on both tubes as shown.



29. Install the provided nylon wrap onto the K&N Filtercharger as shown.



30. Install the K&N Filtercharger onto the K&N cold air intake tube and secure with the provided hose clamp as shown.



31. Reverse the removal process for the plastic wheelhouse valance and air duct with the stock push clips as shown. **NOTE:** Re-install the wheel and torque to factory specifications



32. Reconnect the mass air sensor electrical connection as shown.



33. Reconnect the negative battery cable and double check to make sure everything is tight and properly positioned before starting the vehicle.



34. This K&N Typhoon kit has been designed to be used in two different configurations. In the case of inclement weather, the cold air tube can be removed and the filter can be clamped onto the tube located in the engine compartment to avoid the possibility of ingesting water into the engine when going through large pools of water.

35. The C.A.R.B. exemption sticker, (attached), must be visible under the hood, so that an emissions inspector can see it when the vehicle is required to be tested for emissions. California requires testing every two years, other states may vary.

36. It will be necessary for all Typhoon's to be checked periodically for realignment, clearance and tightening of all connections. Failure to follow the above instructions or proper maintenance may void warranty.

ROAD TESTING:

1. Start the engine with the transmission in neutral or park, and the parking brake engaged. Listen for air leaks or odd noises. For air leaks secure hoses and connections. For odd noises, find cause and repair before proceeding. This kit will function identically to the factory system except for being louder and much more responsive.

2. Test drive the vehicle. Listen for odd noises or rattles and fix as necessary.

3. If road test is fine, you can now enjoy the added power and performance from your kit.

4. K&N suggests checking the Filtercharger element periodically for excessive dirt build-up. When the element becomes covered in dirt (or once a year), service it according to the instructions on the Recharger service kit, part number 99-5000 or 99-5050.